

**LEIGH CREEK**

**COALFIELD**



**Souvenir**



# THE ELECTRICITY TRUST OF SOUTH AUSTRALIA

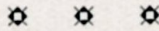


*Leigh Creek.*

Adelaide,  
27th September, 1948



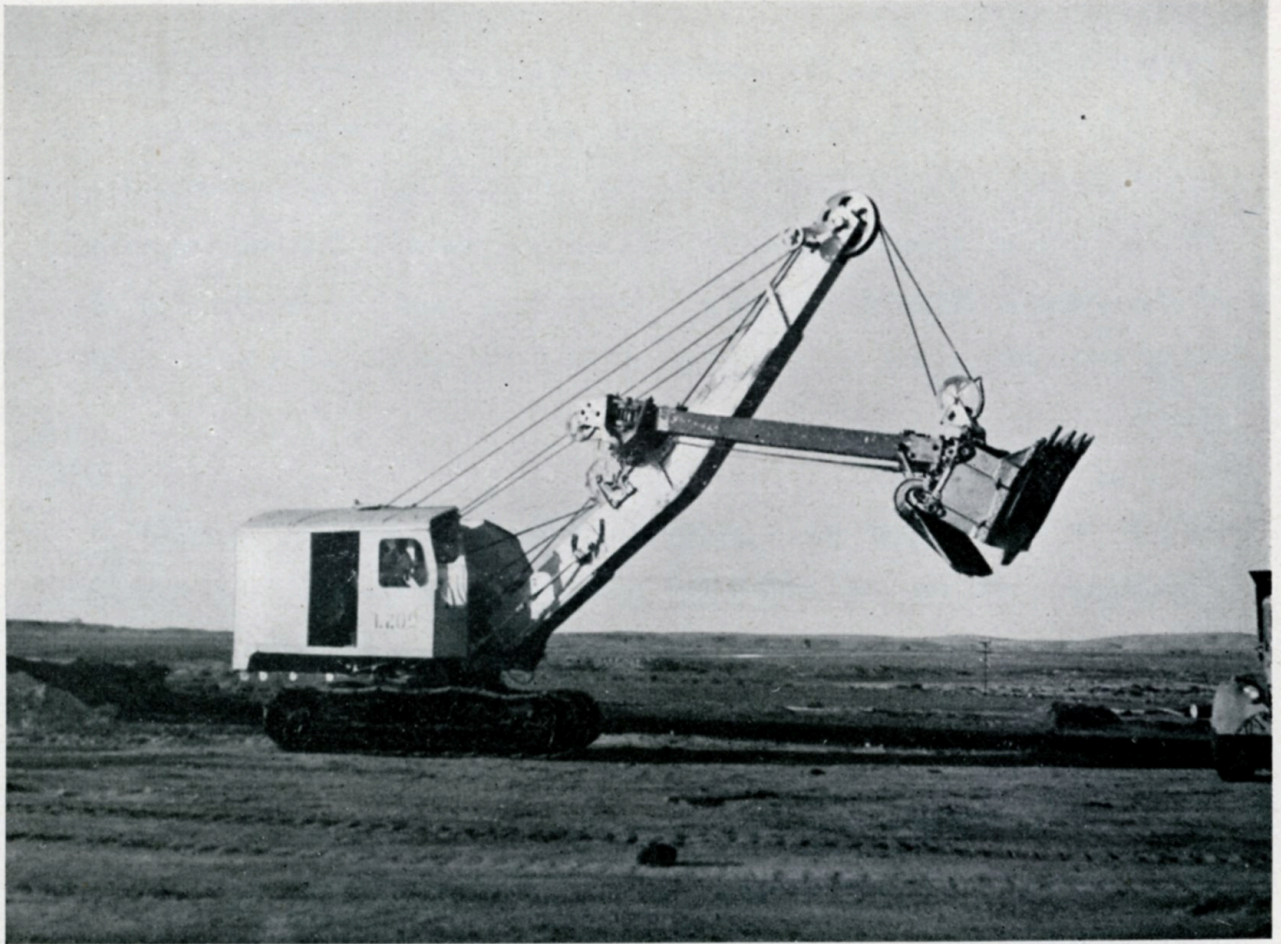
## FOREWORD



**T**HE Trust has been the operating authority at Leigh Creek for so short a time, that we are not in a position to claim any spectacular developments. Our efforts have been directed towards consolidating the very fine pioneering work carried out by the Engineering and Water Supply Department, and to build up present production, at the same time providing for the long range development of a great State asset.

It is hoped that on a subsequent visit it will be possible for Members of Parliament and other visitors to see tangible signs of the work being undertaken by the Trust, both at Port Augusta and Leigh Creek, in order to secure the most economical possible use of our fuel. In the meantime, for general information with regard to the Field, we can do no better than to refer visitors to the booklet prepared by the Engineering and Water Supply Department on the occasion of the 1946 visit, together with this small pamphlet prepared by ourselves to bring production figures, etc., up to date and to include developments in the Northern Basin.





*North-West 1 1/2 Cubic Yard Shovel.*



# The Electricity Trust of South Australia

---

## LEIGH CREEK COALFIELD

---

### *General*

The Electricity Trust of South Australia took over the operation of the Leigh Creek Coalfield as from 6th February, 1948.

Coal production was continued in the Telford Open Cut, and on 19th April, 1948, overburden stripping operations were commenced at the Northern Field.

Coal production at the Northern Field began on 28th June, 1948. These latter operations were found to be necessary to safeguard the weekly coal output and to allow production to be increased at the earliest possible time to 8,000 tons of coal per week.

There are approximately 280,000 tons of coal suitable for economic open cut mining with the present plant remaining in the Telford Open Cut. However, with the present limited equipment available and the increasing depth of overburden, the removal of this coal presents certain difficulties.

### *Output Figures*

Since 6th February, 1948, to 31st August, 1948, 319,000 cubic yards of overburden have been removed from Telford Open Cut, and about 124,000 tons of coal have been removed.

Since 19th April, 1948, to 31st August, 1948, 191,300 cubic yards of overburden, and 41,000 tons of coal have been removed from the North Field Open Cut; the total coal production in Leigh Creek area since coal production operations commenced is therefore approximately 680,500 tons, and 1,620,300 cubic yards of overburden have been removed.

### *New Plant*

In order to allow the coal production to be increased, a number of new machines have been procured, and some of these are now in operation and others in readiness for despatch to the site.





*Telford Open Cut.*

*North Field Open Cut.*





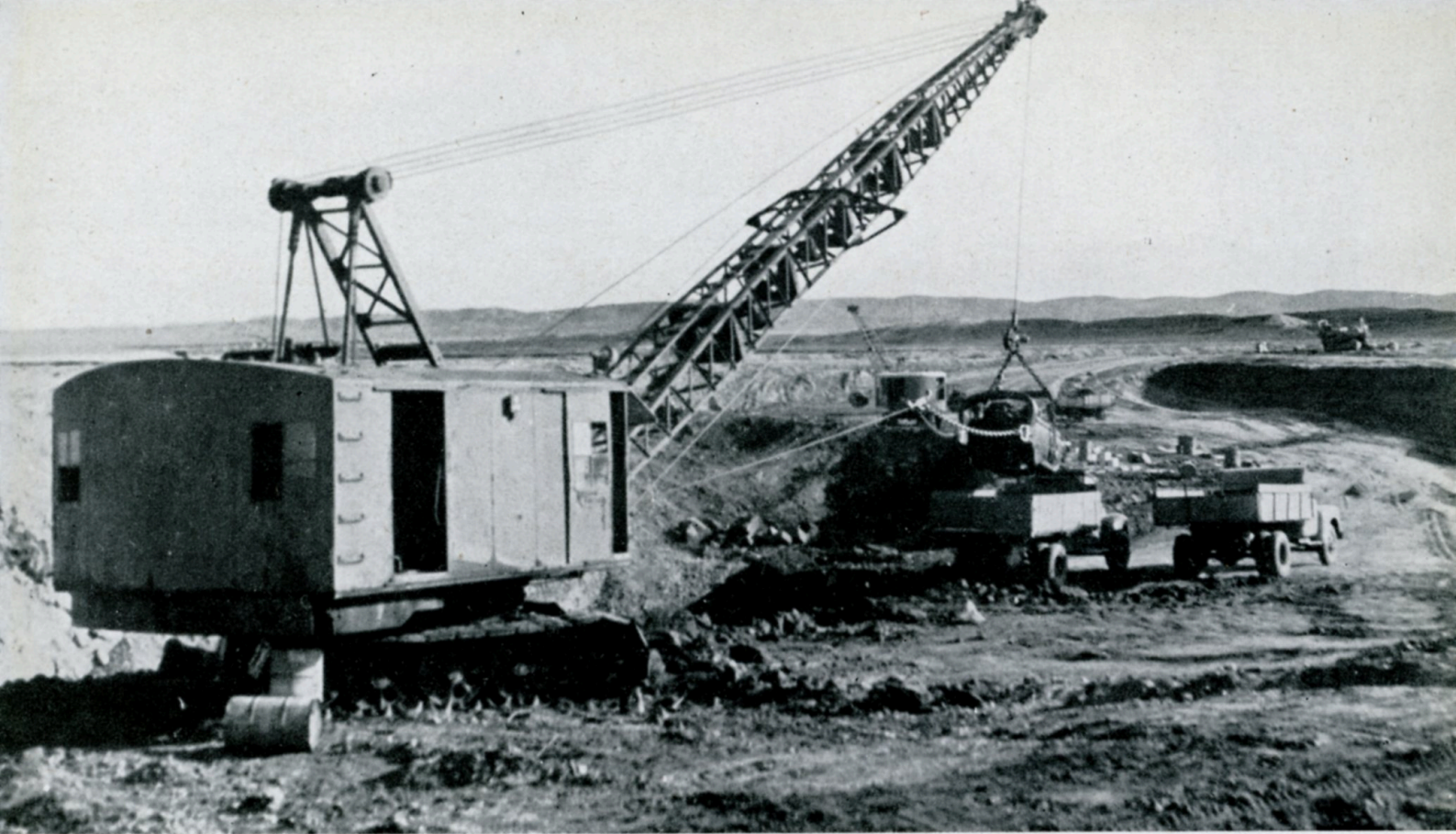


*Coal Seam, Telford.*

*Coal Loading at North Field.*







*Stripping Overburden, North Field.*



*Coal Loading, North Field.*



The following is the position with regard to the major plant items:—

#### EXCAVATORS.

- (a) At site—
  - One North West 1½ cubic yard shovel.
  - One North West 1½ cubic yard dragline.
- (b) Ready for despatch to site—
  - One Thew Lorain 2 yard shovel.
  - One North West 1½ yard shovel.
- (c) For delivery in January, 1949—
  - One Link-Belt 2½ yard shovel.

#### TRACTORS.

- (a) Ready for despatch to site—
  - Two D8 caterpillar tractors.
  - Two D7 caterpillar tractors.
- (b) Shipment from overseas—
  - Four HD-19 tractors.

#### DRILLS.

- (a) Shipment from overseas—
  - Two Parmanco horizontal auger drills.
  - One Parmanco vertical auger drill.
  - One Ruston-Bucyrus 22-W well drill.

From the above it will be seen that sufficient equipment has been procured to enable Leigh Creek to maintain a steady output of over 8,000 tons of coal per week.

A long range plan of increasing production to 20,000 tons per week will be possible when the 9-W Bucyrus-Erie walking dragline, at present on order from the United States of America, arrives in 1950.

This machine will be capable of being used either on the 160ft. boom in a 10 cubic yard bucket, or 200ft boom in a 7 cubic yard bucket, depending on the depth of overburden that is to be handled.

The operation of this machine will obviate the necessity of trucking overburden in the manner of the present operations, as this machine is sufficiently large to deposit the overburden clear of the uncovered coal.





*Coal Crushing and Screening Plant, Telford.*

*Loading Coal to Railway Trucks.*





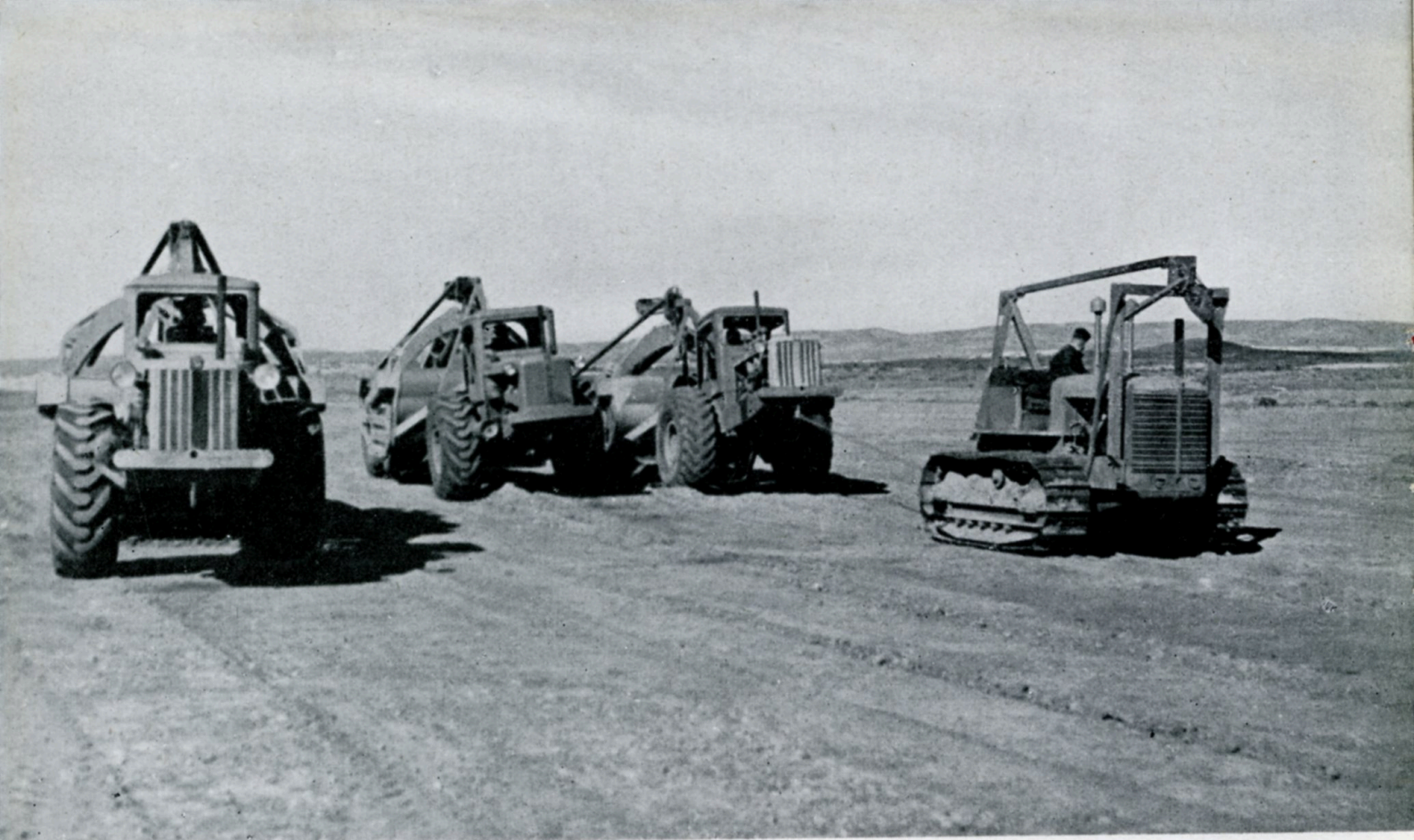


*Tipping Coal at Crushing and Screening Plant.*

*Loading Coal to Railway Trucks.*







*Tournapulls Stripping Overburden, North Field.*



*Tournapull Scraper.*



Owing to the increasing hardness of the shale overburden, the arrival of the drilling equipment is a matter of urgency.

The horizontal augers will drill 5in. diameter horizontal holes above the coal seam to a distance of 50ft. to 60ft. Heavy blasting of this rock overburden will then be possible and the cost of removal substantially reduced.

### *Future Plans*

#### SIDING AT THE NORTH FIELD.

Plans for the provision of a railway siding for loading coal at the North Field are now almost complete. This will be provided with a minimum of delay in order to obviate the present long road haulage of coal to the existing crushing plant and siding at Telford.

A new crushing and screening plant will also be erected on the North Field with sufficient capacity to handle the ultimate programme of 20,000 tons of coal per week.

### *Steam Power Station*

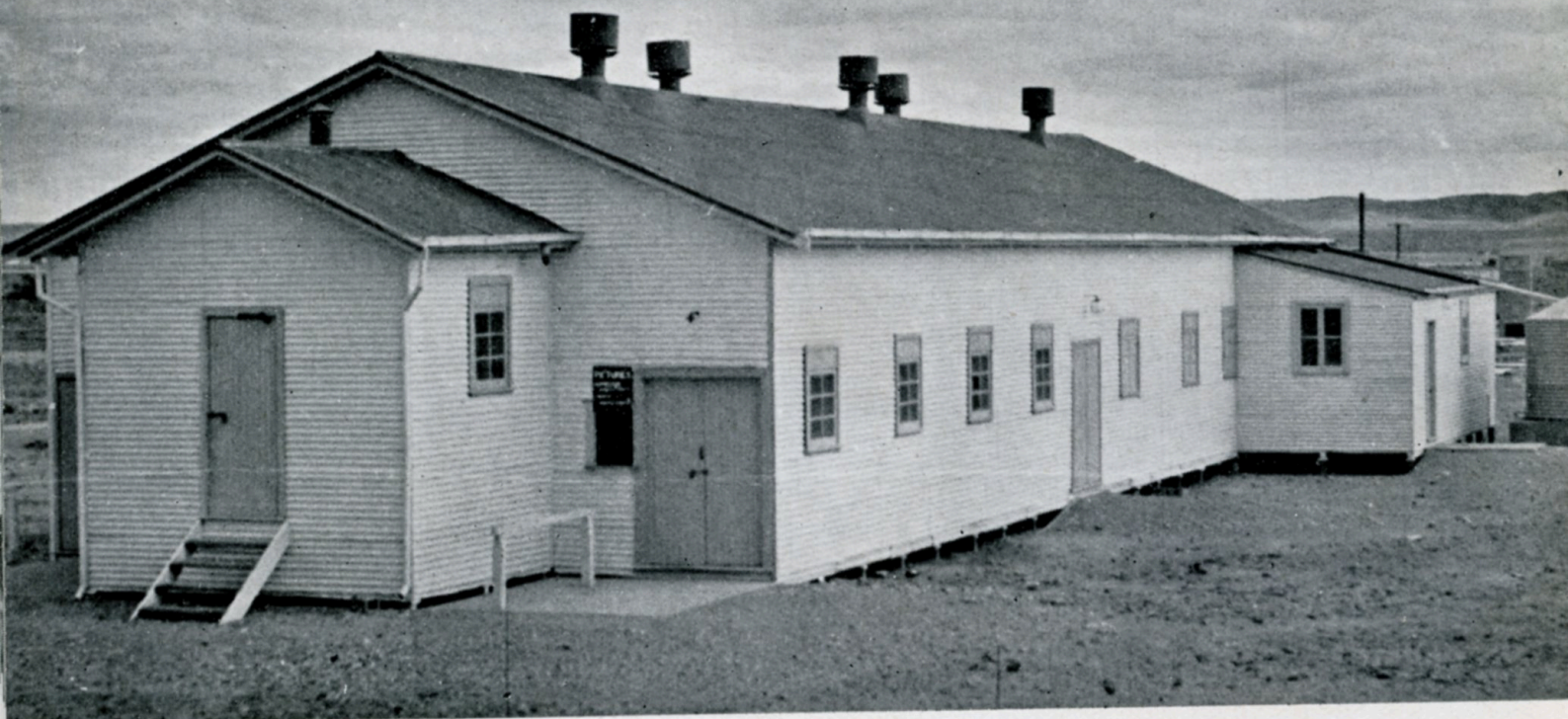
Plans are completed for the erection of a steam power station with a capacity of approximately 3,000 kw. This power station is required to produce the power for the operation of the 9-W walking dragline and other equipment needed for the mining operations in the future.

The power station will also supply power for the Leigh Creek township, and will replace the present small Diesel generating station at Telford.

### *Coal Drying Plant*

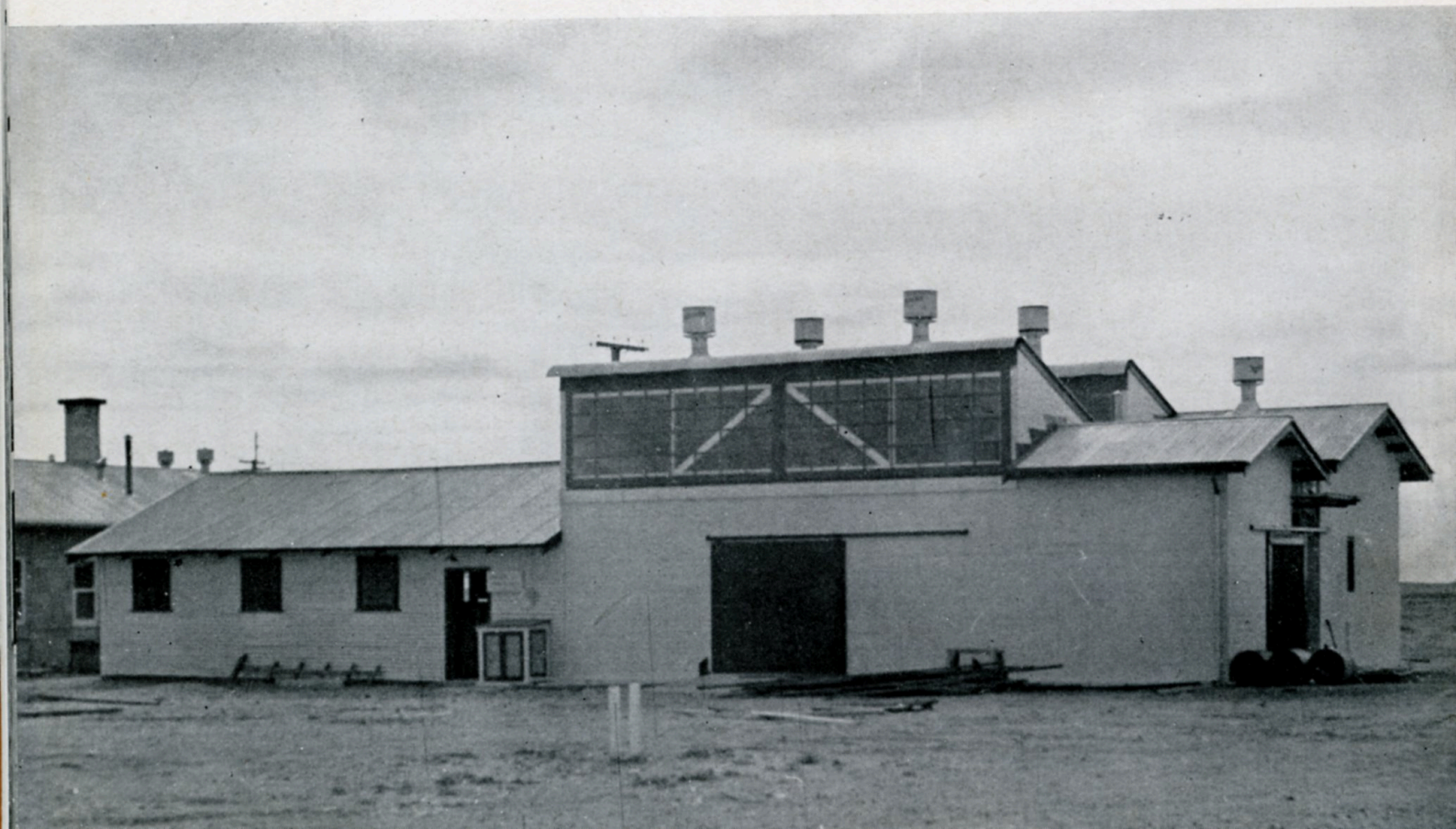
Final plans are in hand for the coal treatment plant at the North Field, including the provision of a coal drying plant operated by the Fleissner process. Before this section of the plant is erected, however, a large experimental plant will be erected in Adelaide in order to carry out further experiments on a commercial scale





*Leigh Creek Community Hall.*

*Leigh Creek Co-operative Store.*





# LEIGH CREEK TOWNSHIP AND AMENITIES

---

## *Additional Houses*

Since the Electricity Trust have taken over the operation of the Leigh Creek Coalfield, a contract for 30 additional houses has been arranged, and all of these are now in the course of being built. The Housing Trust of South Australia are carrying out this work. Next on the building programme is the provision of an additional 40 single men's quarters.

## *Additions to Men's Mess*

In order to cope with the increasing number of employees, it is found necessary to increase the kitchen facilities of the men's mess. These alterations are at present under way, the most important being the addition of a new kitchen, details of which are given below:—

### NEW KITCHEN.

This building will be 54ft. x 23ft. and will be equipped with modern stainless steel benches, sinks, drainers, etc.

It will replace the existing kitchen and the space thus made available will allow the mess room to be extended.

The new kitchen and also the existing mess room will be completely air-conditioned.

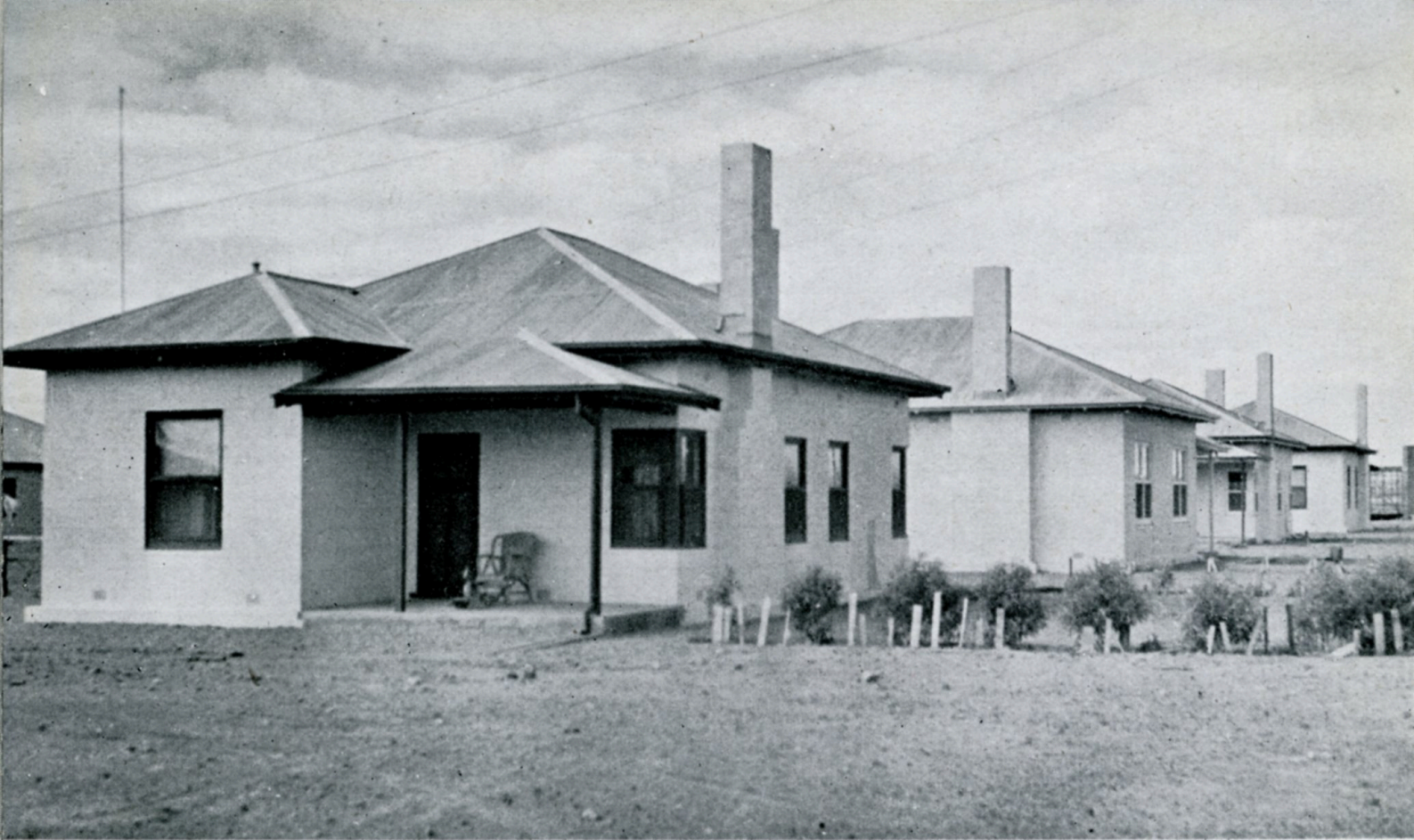
Baking, roasting, and vegetable preparation facilities will be provided by two double-oven electric ranges, one large electric pastry oven, two electric stock pots, two electric vegetable steamers, and two electric toasters and grillers.

A special section for dish-washing equipped with a large automatic dish-washer is also to be installed.

Adequate electric hot water supply will be available from electric water storage heaters.

A self-serving counter is to be installed in the mess room with stainless steel slides for the trays. This will enable meals to be served in a minimum of time. New chairs and tables are being provided in the mess and the whole building re-decorated in pleasing colours.





*Leigh Creek Houses,*

*Leigh Creek School.*





## LEIGH CREEK CO-OPERATIVE SOCIETY

Owing to the increasing number of families at Leigh Creek, the provision of shopping facilities is a matter of great urgency. To fulfil this need the townspeople recently formed a Leigh Creek Co-operative Society. Buildings and equipment are being provided by the Electricity Trust of South Australia on a hire basis. The Leigh Creek Co-operative Society will cater for all household requirements, and at the present moment the following facilities are in the course of construction:—

### BAKERY.

This has been equipped with four large electric bake ovens and all the necessary dough preparation apparatus.

This bakehouse has been designed to cope with the requirements of the mess, field residents, as well as all residents of the nearby districts should they so desire.

### BUTCHERS' SHOP AND COLD ROOM.

This has been erected adjacent to the bakery and will be equipped with a cold room and all modern facilities, including corning tables and tubs.

Counter facilities are also being provided for the sale of meat to the local residents.

To provide facilities for the sale of bread, vegetables, and other essential commodities, a co-operative store has been erected adjacent to the bakery and butchers' shop. This establishment has a counter refrigerator and a large display refrigerator, and is fitted with a modern system of bulk storage bins.

### LAUNDRY IN SINGLE MEN'S QUARTERS.

The existing laundry in the single men's quarters has been re-equipped.

Automatic washing and drying machine, two electric wash coppers, and modern irons have been installed. A softened electric hot water supply has also been provided.

### OTHER AMENITIES.

Steps are at present being taken to improve the cinema facilities at Leigh Creek

These are at present held in the Leigh Creek Community Hall.



It is hoped that in the near future it will be possible to provide better films with a high quality reproduction.

*New Post Office and Telephone Exchange.*—A new post office complete with a telephone exchange is to be built in the township area.

*Additions to the School.*—The present school at Leigh Creek is now almost full, and action is being taken to have the school buildings extended in order to cope with the growing population in the township.

*Tree Planting.*—The programme of tree planting has been continued, and it is pleasing to note that trees planted by the Engineering and Water Supply Department in the past two or three years are now all growing well.