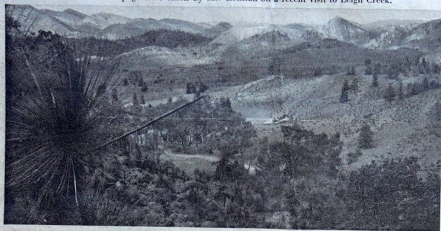


# Leigh Creek Like An Oasis

For the past 14 years the Electricity Trust has been conducting annual garden competitions at Leigh Creek, at which Mr. Noel Lothian is judge.

In addition, the Trust has been carrying out a vigorous tree planting programme, which makes Leigh Creek literally an oasis in the arid surroundings.

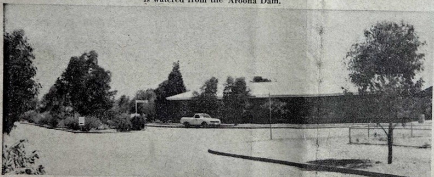
The importance of Leigh Creek is perhaps being threatened by the advent of natural gas finds, and the possibility of automatic power being used for power stations. The photographs on this and the opposite page were taken by Mr. Lothian on a recent visit to Leigh Creek.



General view looking south towards Parachilna Gorge from Mooloolah country, showing Grass Trees in the right and foreground and Native Pine on the hillsides.



Public park at Leigh Creek with River Red Gums and other trees and shrubs. The lawn is kikuyu and is watered from the Arona Dam.



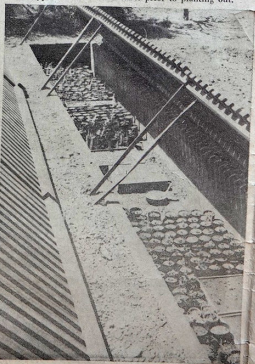
The Co-operative Store and median strip planting, which is commonly done at Leigh Creek using Australian species. BELOW: Roses grow and flower profusely during the spring months. A display in one of the private gardens.



A well grown specimen of Fiddle Wood, Githarexylon, which is now more than 25 ft. high.



In addition to producing excellent gardens and flowers, vegetable output is also high. Shown are beds of cabbage, silver beet, beans, lettuce, together with fruit trees. BELOW: The Electricity Trust raises its own plants for tree planting projects. A small section of the nursery showing seedling Eucalypts and Wattles in tubes prior to planting out.





A well grown specimen of Coral Gum, *Eucalyptus torquata*, growing in the plantation north of the administration centre.



Aroona Dam from which water is pumped to Leigh Creek, 13 miles away. It is built on the confluence of Emu and Windy Creeks, and construction was finished in 1956.



Italowie Gorge, through which one passes on to the Lake Frome plains. Very many years ago Date Palm seed must have been scattered, and the resultant palms in this picture is now about 10 ft. high. BELOW: There are many beautiful plants in the Flinders Ranges near Leigh Creek. This is one of the carrot relatives, or Lace Flowers, growing on a rock ledge along the track to Moolooloo.



A view looking from the staff guest house to Leigh Creek Hospital, which has many modern facilities. A doctor is stationed at Leigh Creek. Plants include roses in the foreground, Black Oak at left, various Eucalypt species and Aleppo Pine on the right.



An aerial view of Leigh Creek looking south to north. The open space on the right hand side of the town accommodates the swimming pool, the town oval and the school. At present there are about 8,000 trees and shrubs planted in Leigh Creek. BELOW: A recent innovation by the Electricity Trust has been the erection of flats. The gardens of many of these are kept in excellent condition and participate in the annual garden competition.

