

# GARDENING

LEIGH CREEK

LEIGH CREEK SA Volume 19 Issue 15 22 November 1973 Price 3c

## SPECIAL GARDENING GUIDE

A selection of shrubs and trees suitable for Leigh Creek are available and can be planted now.

**Jacaranda** This spectacular tree is native to Brazil and has fine fern like foliage and masses of blue flowers in early summer. They grow and flower quickly from seedlings, provided they are well watered and fertilised often. There are several excellent specimens in Leigh Creek.

**White Cedar** is native to the East Coast of Australia and parts of Asia. Although from high rainfall areas they do well in the inland. It is one of Australia's only deciduous native trees. In early spring it bears a profusion of lilac coloured flowers with the new foliage and brown berries develop and hang on the tree through the next winter. This is one of the hardiest and fastest growing shade trees for this area and makes an excellent lawn specimen.

**Kurrajong** There are two species of Kurrajong grown in Leigh Creek. The Desert Kurrajong is native to parts of SA, NT & WA and is a shapely small tree with lobed finger-like leaves. The other Kurrajong is a medium sized shapely tree from the Eastern States. Both make excellent specimen trees and grow fairly quickly if watered and fertilised regularly.

**Wilga** This ornamental, willow like tree is native to the dry inland of SA, NSW, QLD & WA. It is tolerant of most soils and does well in Leigh Creek. It produces cream coloured flowers most of the year and grows best if watered and fed regularly. It is very rare in SA.

**Native Figs** There are over 2000 species from the warm to tropical parts of the world. The most widely planted in Australia is the Moreton Bay Fig which is native to the east coast around Brisbane. Although huge trees in wetter areas they develop into a much smaller shapely tree in Leigh Creek and with their large glossy leaves are good shade trees.

**Flowering Guns** There are dozens of species well suited to Leigh Creek conditions and all are fast growing, drought resistant and good for shade and shelter. Flower colour can be white, cream, yellow, orange, pink or red. A few of the best flowering ones are Coral Gun, Lemon Flowered Gun, Silver Ginlet, Native Fuchsia and Salmon Gun.

**Native Frangipani** This fine upright fast growing tree is native to coastal Qld. and NSW. It prefers rich soil and plenty of water and produces sprays of yellow scented flowers. It grows to about 15 ft. and they are good specimens in Leigh Creek and at Arcona.

**Fiddlewood** These shrubs grow to 10 or 15 feet in Leigh Creek and are hardy and fast growing. They respond well to regular watering and fertilising. Foliage is rich glossy green and turns a bronzy colour in winter. It produces small white fragrant flowers. One of the best shrubs for Leigh Creek gardens.

**Pointsettia** This shrub is native to Mexico and grows to about 10 ft. Flowers are red, cream, pink, yellow or white but red is the most common. Flower bracts are produced in winter and last well in to spring. After flowering they should be cut hard back. They appreciate good soil and regular watering and do not like frost. They grow very well in LC.

**Flinders Range Wattle** This beautiful winter flowering shrub is native only to SA and is found in the Flinders and Gawler Ranges. It grows to about 6 ft. and has weeping silvery blue foliage. Flowers are a very pale yellow and new growth is pink. It is very hard and drought resistant.

# Cinema

SATURDAY - 24/11/73

"SOLDIER BLUE" (M)

A staggeringly powerful magnificent film. Must be numbered among the most significant, brutal, liberating and honest American films ever made. It is a movie of great art & courage.

STARRING: Candice Bergen, Peter Strauss and Donald Pleasence.

"HARD CONTRACT" (M)

Love. Murder... Everything they do is 97% control and 3% emotion.

STARRING: James Coburn, Lee Remick, Lilli Palmer and Patrick Magee.

£\*£\*£\*£\*£\*£\*£\*£\*£\*£\*£\*£\*£\*£\*£\*£\*

WEDNESDAY - 28/11/73

"PRETTY MAIDS ALL IN A ROW" R

Rock is a teacher who likes to see more of his class.... a morals councillor who frees his pupils from frustration!

STARRING: Rock Hudson, Angie Dickinson and Telly Savalas.

"MARLOWE" (M)

A thrill-charged story of an ultra-modern private investigator who faces just about every peril and danger of his profession in the course of bringing a murderer to justice.

STARRING: James Garner, Gayle Hunnicutt and Carroll O'Connor.

£\*£\*£\*£\*£\*£\*£\*£\*£\*£\*£\*£\*£\*£\*£\*£\*

SATURDAY - 1/12/73

"CARRY ON HENRY" (M)

The film is based on recently discovered manuscripts by one William Cobbler, which reveals the fact that Henry VIII did in fact have two more wives.

STARRING: Sidney James, Kenneth Williams, Joan Sims, Charles Hawtrey, Barbara Windsor & Kenneth Connor.

"MELODY" (NRC)

The young stars of Oliver in a hilarious comedy. The happiest film of all time.

STARRING: Jack Wild, Mark Lester & Tracy Hyde.

£\*£\*£\*£\*£\*£\*£\*£\*£\*£\*£\*£\*£\*£\*£\*£\*

WEDNESDAY - 5/12/73

"NIGHT OF THE LEPUS" (NRC)

The story concerns a scientist, deeply concerned with ecology, who becomes engrossed on the rabbit pop.

STARRING: Stuart Whitman, Janet Leigh and Rory Calhoun.

Cont'd Next column.

£\*£\*£\*£\*£\*£\*£\*£\*£\*£\*£\*£\*£\*£\*£\*£\*

# Ads

DENTIST: will be visiting Leigh Creek from 12 Dec - 14 December. Appointments Admin. Phone LC 182 Extn 21 or Extn 8.

£\*£\*£\*£\*£\*£\*£\*£\*£\*£\*£\*£\*£\*£\*£\*£\*

WANTED TO BUY:-

Babies CHANGING TABLE  
Contact: 14 Fourth Street.

£\*£\*£\*£\*£\*£\*£\*£\*£\*£\*£\*£\*£\*£\*£\*£\*

WANTED:-

Old Lino for Children's Playhouse.  
Contact: B Moyses  
14 First Street

£\*£\*£\*£\*£\*£\*£\*£\*£\*£\*£\*£\*£\*£\*£\*£\*

FOR SALE:-

1 DRI CLAD Swimming Pool. 15'x15'x3' with filter and ladder. Not been unpacked. \$100.00 O.N.O.  
Contact: Mrs D Corbett  
1A Second Ave

£\*£\*£\*£\*£\*£\*£\*£\*£\*£\*£\*£\*£\*£\*£\*£\*

LOST:-

Birth Certificate. Very old - discoloured and tissuey.  
Belonging to S GOODALL - REWARD

£\*£\*£\*£\*£\*£\*£\*£\*£\*£\*£\*£\*£\*£\*£\*£\*

FOUND:-

1 Bunch of keys (in North Terrace)  
CONTAINS: House key, Car keys, PO Box Key.

CONTACT "TOPICS"

£\*£\*£\*£\*£\*£\*£\*£\*£\*£\*£\*£\*£\*£\*£\*£\*

LEIGH CREEK AREA SCHOOL

VACANCIES - TEACHERS AIDE

Applications are called for the position of a Primary Teacher Aide (30 hrs per week) and Secondary Teacher Aide (30 hrs per week) at the Leigh Creek Area School commencing 31 January 1974.

These positions are additional to the present positions.

Applications from persons with 4 years Secondary Education should be in writing stating age, marital status and other relevant qualifications and should include position/positions sort in order of preference and sent to Head Master, Leigh Creek Area School.

Applications close on Thursday 29 November 1973. Selected applicants will be interviewed and all applications will be acknowledged.

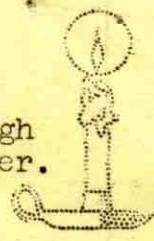
£\*£\*£\*£\*£\*£\*£\*£\*£\*£\*£\*£\*£\*£\*£\*£\*

WEDNESDAY - 5/12/73 (Cont'd...)

"TICK, TICK, TICK" (NRC)  
A southern county's first black sheriff with the white officeholder who was defeated.

STARRING: Jim Brown and George Kennedy

£\*£\*£\*£\*£\*£\*£\*£\*£\*£\*£\*£\*£\*£\*£\*£\*



*10  
han  
only*



get with it we are :-

# EARN SHAW'S

\*S\*E\*R\*V\*W\*E\*L for SENSATIONAL S\*A\*V\*I\*N\*G\*S\*

## \*CHRISTMAS ORDERS\*

We are taking orders now for Turkeys, Chickens, Ducks Xmas Cakes and Puddings, Mince Pies and Party Requirements.

With the supply situation as it is we will not know until our last supply truck arrives, how much of our Xmas orders will be supplied.

IT WILL BE STRICTLY SUPPLIED ON THE BASIS OF 1st ORDERS - 1st SERVED.

Supplies of ALL commodities are restricted or unavailable and the situation at Xmas will probably be worse. Decide on your requirements now and let us know.

\*\*\*\*\*

## MEN'S SHIRTS

'Town Topic' - 'Bisley' and 'Nevada' all arrived yesterday - Beautiful colours and prices are good. These shirts are also in short supply so get in while there is plenty!

\*\*\*\*\*

## LADIES SHOES

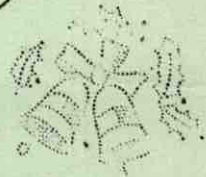
About four varieties came in on Wednesday. Leather thongs, Flat Sandals, Fashion Sandals - Come and see - very smart.

\*\*\*\*\*

## PARKER PENS

Our Christmas stock of these quality pens, biros and pencils are in. Lovely gift boxed - ideal present for Dad or members of your family. Prices start around \$3.00

# ONLY 3 PAYS TO XMAS



## FOOTBALL CLUB PRESENTATION

### TROPHY

- Best & Fairest
- Best Backman
- Best Forward
- Leading Goal Kicker
- Umpires Vote
- Most Improved
- Best Team Man
- Coaches Trophy
- Most Consistant

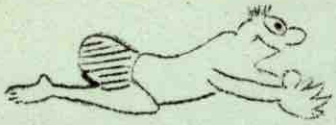
### WINNER

- G McPherson
- P Bould
- R Willson
- R Male
- T Evans
- L Brand
- D Fee
- T Moroney
- J Daulby

### DONATED BY

- Ron Clarke
- R Earnshaw
- I Ward
- Committee
- D Ellis
- R Hatch
- L Daulby
- J Daulby
- D Beal

CONGRATULATIONS TO YOU ALL



SWIMMING POOL

Evening sessions have now commenced - 7pm - 9pm excluding Wednesday and Saturday. Sunday times are 1.30pm - 9.00pm. Swimming training is held Tuesday and Thursday evenings at 5.30pm and Sunday morning at 10.30am. The Club would appreciate assistance in the form of timekeepers for the training sessions. Due to the excellent membership enrolment this year, it may be necessary to split training sessions into two groups. 11 years and under Wednesday and Friday, 12 years and over Tuesdays and Thursdays. The time remains the same. This situation will be looked at in the next week or so and members will be notified.

\*\*\*\*\*  
\*\*\*\*\*

CWA\*\*\*CWA\*\*\*CWA - TONIGHT!!!

November 22 - INTERNATIONAL DAY & BIRTHDAY (Holland)

Roll Call: Something for which Holland is famous.

Competition: (a) Kindergarten Scrap Book  
(b) Dutch Clog

Hostesses: Mesdames James, Dorton, J Gangell, Binetti.  
(M MANN - Secretary)

LEIGH CREEK KINDERGARTEN

Secondhand Clothing and Jumble Stall  
Earnshaw's Verandah  
10.30am Saturday, November 24  
also  
B I N G O

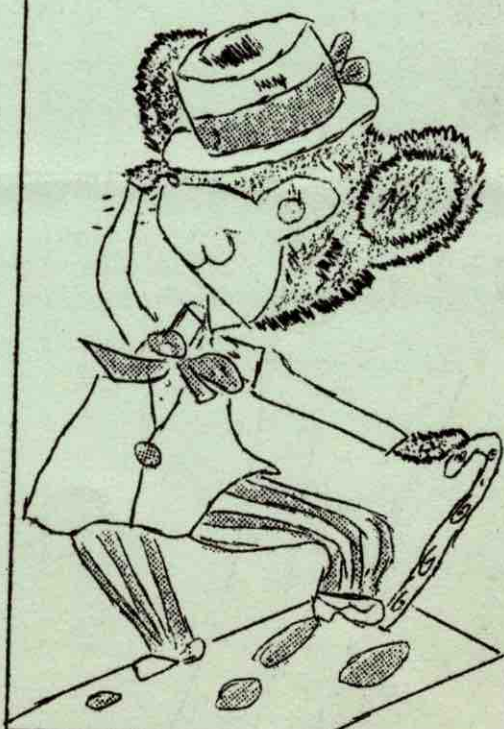
Canteen Lounge Tuesday 7.30pm 27th November

Bigger the Crowd the Bigger the Prizes.

1/2  
1/2  
1/2  
1/2  
1/2  
1/2  
1/2  
1/2  
1/2  
1/2  
1/2  
1/2  
1/2  
1/2  
1/2  
1/2  
1/2  
1/2  
1/2  
1/2  
1/2

WARDS

AGENTS for:  
DRY CLEANING and  
Hannagans Shoe Repairers - Port Augusta.



Cooldrinks  
Newspapers  
Magazines  
Tobacco  
Sweets

Phone LC 132

JACQUELINE'S HAIRDRESSING SALON

Owing to the recent substantial rises in costs and wages, we have been advised by the Master Hairdressing Association to review all prices of Hairdressing. Unfortunately this has resulted in increased prices and the new charges will be posted on the Salon door as of 23 November 1973. We regret any inconvenience this action may cause to our clients.

Jackie.

+++++  
What is the hardest part of milking a mouse?  
GETTING THE BUCKET UNDER IT!  
ooooO0000oooo

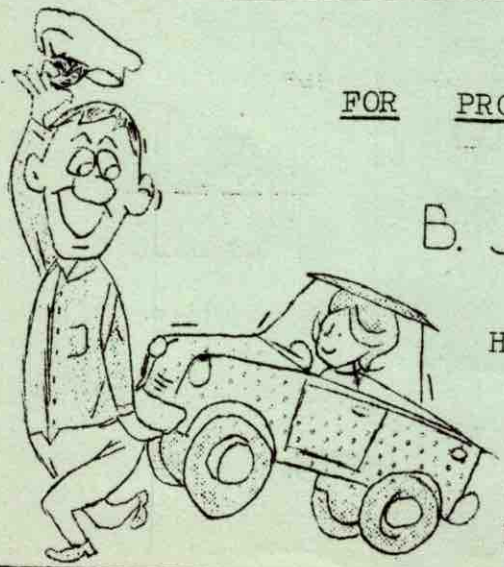
FOR PROMPT EFFICIENT SERVICE  
Call

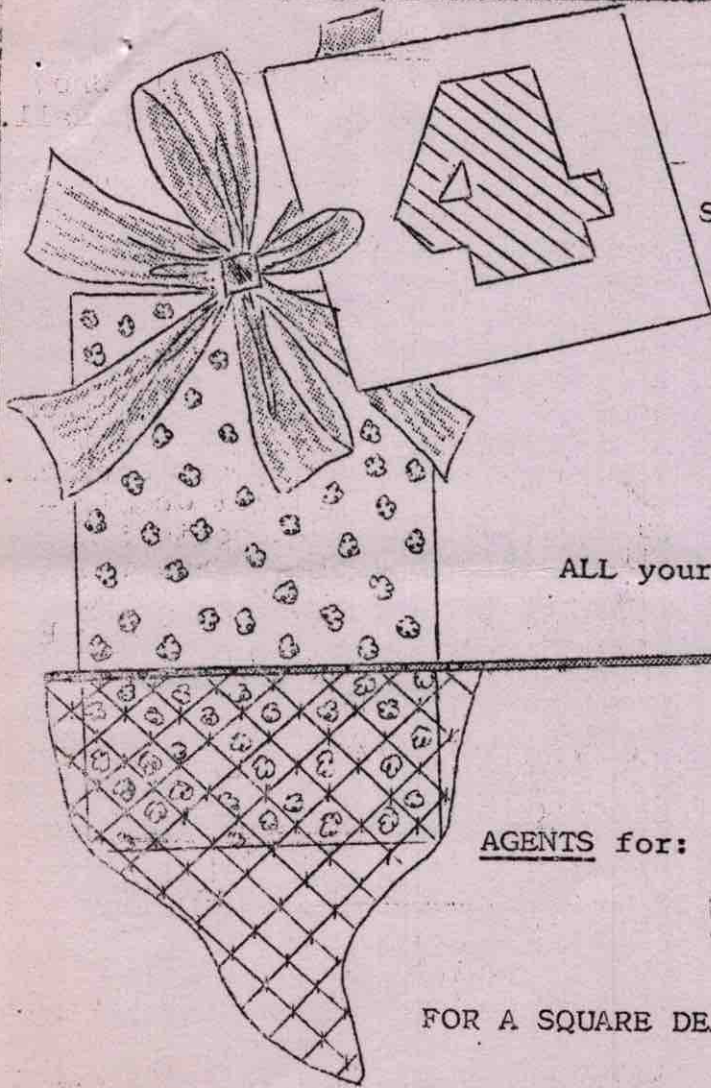
B. J. HUGHES & SONS  
QUORN

HOLDEN is now, more than ever, AUSTRALIA'S FINEST CAR . . . .

Be a HOLDEN Owner - for happy and trouble-free motoring . . . .

Local Agent . . . KELVIN PLUMB . . . 'Phone LC 5





# Daulby's

SHOP TODAY - THE FOUR SQUARE WAY

\*\*GROCERIES  
\*\*SMALL GOODS  
\*\*HARDWARE

\*\*MEN'S/WOMEN'S and  
\*\*CHILDRENS WEAR  
\*\*DRAPERY

ALL your household needs are catered for.

\*Watch for that SPECIAL SHEET every week.

\*BIG savings, BIG value.

AGENTS for:

TAA and BOEING Airlines

THOMAS TOURS - Bus Service.

FOR A SQUARE DEAL \* \* \* \* \* DEAL FOUR SQUARE



Now that summer is here water usage has increased alarmingly... Many people are watering excessively which means water is being wasted. Naturally gardens will need more water in summer but sensible watering practices are necessary to minimise waste.

1. Watering is most effective in the evening or night as it does not evaporate so quickly.
2. When sprinklers are used they should distribute large drops, not emit a fine spray as much of this drifts away.
3. Mulches should be used as much as possible. They lessen evaporation from the soil surface and prevent soil from drying out so quickly and help smother weed growth. Suitable mulching materials include lawn cuttings (if they do not include seed), wood shavings, leaves and animal manure. These all rot down which improves the soil but they have to be replaced periodically. Gravel, stones and plastic sheeting can also be used. Some low growing ground cover plants e.g. alyssium, gazanias and pigface form an effective living mulch.
4. When watering lawns, shrubs etc. a good thorough soaking about twice a week in hot weather is better than frequent light sprinklings. Vegetable and flower beds will probably need more than this unless well mulched. A suitable type of sprinkler in position for 1 hour gives a thorough watering.

GREEN THUMB

KINDERGARTEN

Reminder - Enrolments should be made at the Kindergarten by Friday December 7. We only have a few vacancies left for 1974.

S Knott - Director

CHURCH DIARY - UNITED CONGREGATION

Sunday 24 November - Sunday School  
9.30am - last Sunday for this year

7.00pm Evening Service

oooo000oooo

# Thomas Tours

PTY LTD

Passenger & parcel service between Northern Flinders Ranges area and Adelaide. Passengers may travel over any section provided they are set down north of Hawker on Northbound journey and picked up before Hawker on Southbound journey.

Departs (101 Franklin St., Adelaide Northbound) 7.45am TUESDAY & SATURDAYS

Depart (Arkaroola 7.am WEDNESDAYS Southbound) Leigh Creek 10.45am & SUNDAYS.

Passenger bookings & freight enquiries at:-

- Arkaroola - Arkaroola Enterprises
- Leigh Creek - Daulbys Four Square St.
- Copley - The North Gate
- Beltana - Mr I Hull
- Parachilna - Parachilna Hotel
- Quorn - Flinders Ranges Prom. Serv.
- Adelaide - Ansett-Pioneer

OR

THOMAS TOURS, 634 Goodwood Road, DAW PARK. Telephone 761615 or 767708

An article of interest found in the EZ Industries Ltd Annual Report for 1973.

### Beltana, South Australia

Further investigation continued on the modified fuming process for the treatment of Beltana ore in South Australia. A number of technical and environmental problems remain to be solved. Paralled with this investigation, it is proposed to examine the possibility of direct leaching of Beltana ore at Port Pirie, South Australia, in conjunction with the Broken Hill Associated Smelters Pty. Ltd.

ooooo000ooooo

## SCOUTS

On Friday November 30 a Film Show will be held in the Community Hall. The films will show aspects of Rock Climbing, Conservation and the Guide Movement.

A selection of colour slides will be shown on the activities of the association during the last twelve months.

An inspection of the Cubs and Scouts will be made by Mr L Gibson who has recently retired from the association after 20 years service. Mrs Bev Taylor, District Commissioner of the Guides Association will be inspecting the Brownies & Guides. A light supper will be provided after the Annual General Meeting of the Scouts/Cubs Assoc.

EVERYONE WELCOME - FREE!!

#####

### LCL - FAR NORTHERN BRANCH

A barbecue picnic will be held at the 2nd Jubilee Creek crossing (same place) on Sunday November 25 at 12 noon.

Chops and sausages will be on sale. Bring your own refreshments.

Members and Friends welcome.

#####

When arranging your function AVOID THESE DATES

24 Nov	Annual Staff Dinner	C
30 "	Camera Club Dinner	LH
30 "	Scouts/Guides Parents & Friends night.	CH
1 Dec	Electric. Branch	BBQ
1 Dec	Prod. Branch Party	GC
6 "	Combined Church Party	CH
8 "	Childrens Xmas Party	CH
8 "	B&SS Branch Party	GC
11 "	School Speech Night	CH
15 "	Mechanical Branch Party	

\*"\*\*\*\*\*"\*\*\*\*\*"\*\*\*\*\*"\*\*\*\*\*"\*\*\*\*\*"

What are thongs?  
THINGS THE THEEKERS THING!

A WEDDING OR A BIRTHDAY COMING UP ????

CHOOSE YOUR GIFTS FROM

L E I G H    C R E E K

## BOOK SHOP

AGENT FOR: 'THE NEW ZEALAND ASSURANCE CO'

We have a range of:-

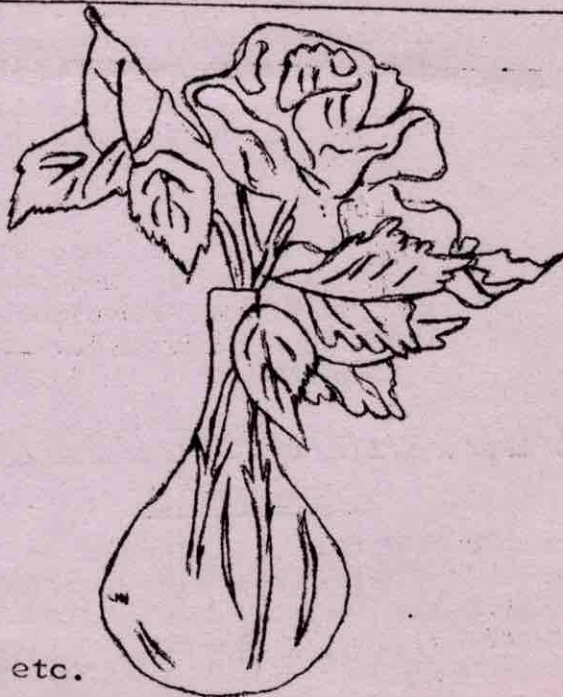
RECORDS

JEWELLERY

TOYS

ELECTRICAL GOODS

CAMARAS etc.



**LEIGH CREEK SCHOOL WELFARE CLUB**

Will Ladies please remember our Christmas Break-up Party on the 29th November at 2.00pm. All Ladies most welcome. Please bring a plate of afternoon tea and a small gift for exchange. I would like to extend my sincere thanks to all who helped with donations or gave their time to make the Continental Night such a success.

H Andrews  
PRESIDENT

I H A N K Y O U

Having to spend some time in Hospital, we would like to thank Dr Collins, Matron and her Staff for their kindness, understanding and helpfulness at all times to all the patients. Our good progress is due to their hard work. Also, special thanks to the Cook and his Staff for the excellent and varied meals provided.

H Andrews  
K F Byron  
B McCleery  
Y Treloar  
R Wilton

\*R\*E\*M\*I\*N\*D\*E\*R\*

Please remember the restrictions placed on garden watering each Wednesday i.e. 12 midnight to 12 mid-night - "NO SPRINKLERS". Full co-operation will avoid the necessity to impose further inconvenience of extra restrictions.

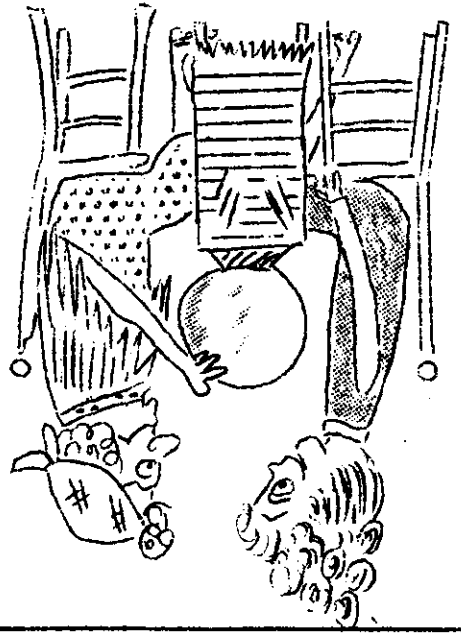
**ST LUKES NEWS**

2 Dec Morning Prayer 9.00 am.

Russians often possess a lively sense of humour. Last October they reported another world record for the Soviet Union. A Russian Engineer had given up smoking 57 times in one year breaking Mark Twains' record of 50.

**RED-BACK SPIDERS**

The red-back spider occurs in practically every region in Australia and normally is found in well shaded places sheltered from the wind and rain - in outhouses, woodheaps, rubbish dumps, empty tins etc. The male of the species is barely one third of the size of the female and is harmless to man. The female is dangerous and her bite can inject enough venom to kill a mouse in several minutes or a child in several hours. A healthy adult may be laid up for a week or more. The female red-back creature with legs slender and long in proportion to the size of its body. Its back is conspicuously marked with a broad longitudinal stripe which is usually coloured brilliant red although, in some cases it may be a shade of pink or orange or even off-white. The bite may cause a sharp stinging sensation or it may not be felt. Redness and swelling may develop at the site of the bite and be accompanied by localised pain and sweating. The pain which is often burning in character, increases in severity and becomes generalised. Profuse sweating, shivering and muscular weakness are manifestations. An antivenom is available which will quickly allay the effects of the red-back spider bite. First-aid treatment is simple and effective. If the bite is on a limb: - Make the person lie still. Tie a broad bandage around the top of the limb (thigh or upper arm). This will restrict the flow of the venom through the system. Do not use string, rope or other narrow material apply ice to the area of the bite. If the bite is on the trunk, the treatment is the same but without the restrictive bandage. When this aid has been rendered the patient must be transported to the doctor or Hospital. If medical aid cannot be obtained within 1 1/2 hours remove the broad bandage and leave off.



I SEE A GOOD TIME IN YOUR FUTURE IF.....  
YOU GO TO.....

*Jacqueline*

From TUESDAY - FRIDAY the Hairdressing Salon is now able to do extra work.

If you feel like a SHAMPOO, SET or any other hairdressing needs, DON'T HESITATE. Pick up that phone and ask for Leigh Creek 30. (or pop in and see us).

MEN - NO appointments are necessary

MISCELLANY



MISCELLANY

HAPPY HOLIDAYING to our Editress and family who are spending a well earned holiday break on Kangaroo Island.

On the sick list this issue we have:-

- Master Gary FUCHS
- Mr Bill DAVIES
- Mrs Roma WILTON
- Mrs McCLEERY
- " Kay BYRON
- " DAWES
- " TRELOAR
- " ANDREWS

Get well wishes to you all.

"CONGRATULATIONS" to Mr A James who completed 20 years ETSA service on 19/11/73.

"CONGRATULATIONS" to Bill and Shirley Knott who recently celebrated their Pearl Wedding Anniversary.

Nice to see Mr Willson Snr. spending a short holiday with Bob and Robyn - hope your stay here is a pleasant one

ALSO

We hope that Mr Vasilunas Snr. has enjoyed his stay at Leigh Creek with Leo, July and Jason.

Welcome back to Danny and Joan Ashcroft who have recently arrived back in town after living in Western Australia for some time.

A farewell dinner for Don and Sondra Franks was held at the Canteen on Friday 16 November. 19 members of the School Welfare Club and the School Council with husbands and wives attended. The delicious dinner and refreshments were enjoyed by all participants.

We extend sincere sympathy to Ron Male on the recent loss of his father.

DON'T FORGET Badminton every Tuesday night - 7.30pm in the Community Hall Newcomers especially welcome.

DO YOU NEED HELP WITH - Housework, ironing, babysitting, errands etc., (after 27 November), please contact Miss NEVETTE COLLINS, 17 Seventh St.

TOPICS SUBSCRIPTIONS - TOWN

Our delivery officers, suitably identified will begin their house calls this month for the annual 50c subscriptions. We trust you will receive them kindly.

Postage

A call will be made in December for the postage subs.

WANTED

MUSICIAN

Interested in joining a dance combo - must be able to read music.

Contact LC 15 Before Monday

GARDEN CLUB

The Garden Shed will be open this Saturday from 1pm - 2pm for the sale of fertilisers and garden equipment etc. Orders for plants or materials not stocked will be taken.

J Zwar SECRETARY

Brenda and Ray Gray wish to thank all for the willing help, consideration and thoughtfulness received during the time of Mom's final illness.

SCHOOL NEWS

Teacher Transfer and Resignations

- P Zeicmanis Appointed Senior Master - Vermont High School.
- D Franks Half time Study Scholarship Leave.
- H Bills Resigning for Overseas travel early 1974.
- B McCallum Joining Commonwealth Teaching Service at Alice Springs.
- B Inverarity Resigning for family reasons.

GOOD LUCK TO YOU ALL



# A Night of Fun and Laughter

ALL LADIES OF THE TOWN AND DISTRICT ARE WELCOME TO ATTEND

THE  
COMBINED CHURCHES CHRISTMAS  
PARTY

AT THE COMMUNITY HALL  
ON THURSDAY 6th DECEMBER

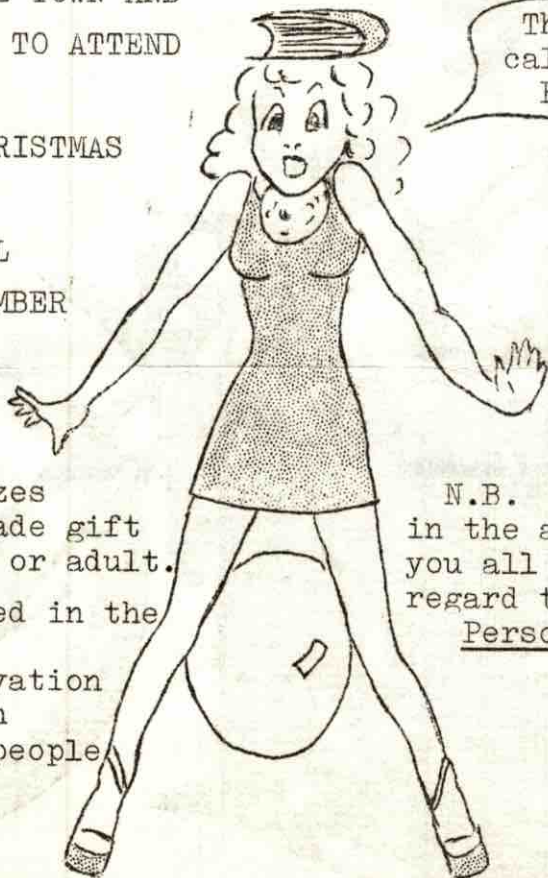
8 P.M. SHARP.

\*\*

A COMPETITION will be held and prizes awarded for a home-made gift suitable for a child or adult.

All gifts entered in the competition will be forwarded to the Salvation Army to help brighten Christmas for needy people

\* \* \*  
\*\*\*\*\*  
\* \* \*  
\* \* \*



They call this  
FUN!

A.E.  
G.M.S!

COMPETITIONS!  
IT<sub>E</sub>M<sub>S</sub>!

You can't help but enjoy it!

N.B. As there are so many ladies in the area we are unable to ask you all individually, PLEASE regard this notice as your Personal Invitation.

COME ALONG

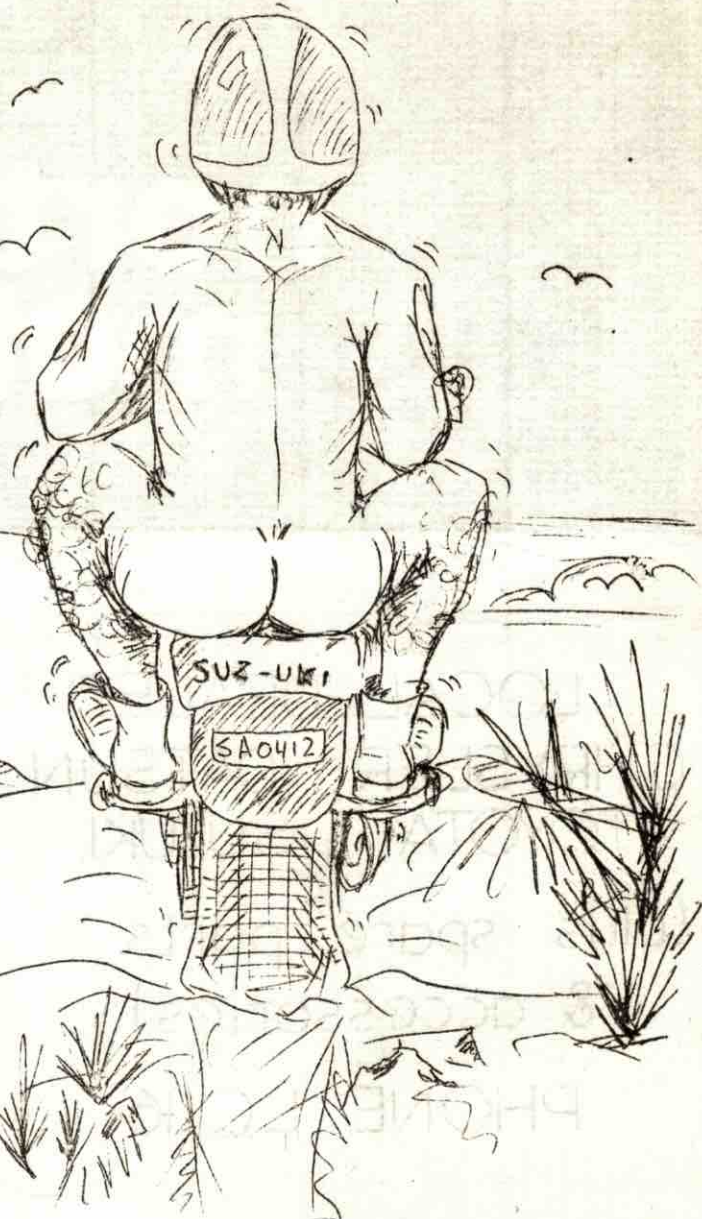
JOIN THE FUN

BRING YOUR FRIENDS

# SNOPY

# SAYS...

Guess who went riding "bareback" on his new motorbike the other week?





# northern motors

LOCAL DEALER  
CHRYSLER, DATSUN  
TOYOTA, SUZUKI.

(plus spare parts  
& accessories)

PHONE LC 16

LOCAL AGENT  
YAMAHA, HONDA,  
KAWASAKI

incl. Helmets,  
goggles, gloves  
and all other bike  
accessories