

# Topics

LEIGH CREEK

LEIGH CREEK.

13th JULY, 1955.

Volume 1.

Price 1d.

Issue 5.

One fact proven in our life is: whatever we do affects others; we cannot live to ourselves. There are times when a twinge of rebellion arises at the discovery. 'I can go my way and let others to theirs' is a fallacy. We are Beings of a kind; we belong together; our strength is in our association with others. No man can stand alone: he is not constituted to do so.

Approaching this truth from another angle, we find in it one of the noblest characteristics of mankind. We must share in a greater or lesser degree not only the joy and happiness of others, but the grief and pain as well.

When God walked the highways of life as a man, He was found amongst the sick, the poor and the needy. Life for Jesus was not a mystery to be pondered or a problem to be solved; it was an experience to be shared with His fellow creatures. It was His capacity to so take upon His own shoulders the cares worries and disappointments of others, that drew not only the educated but also the wasters of society to Him. His preaching attracted because He was so much in contact with life.

One of the traits of a 'real man' is his capacity to 'feel' for others. At the accusation of the harlot Jesus forgave when others would stone. He had the knowledge which enabled Him to put Himself in the place of another. This is surely the secret of living.

The worth of a man is not to be estimated by the position he holds in his work, nor by the size of his bank balance, nor even by the standard of his education. Primarily it is a man's capacity to share the troubles of his fellow men. What employer could ride rough-shod over the feelings and material welfare of his employee, or what employee could waste the boss's time and pilfer his goods if each really understood the circumstances of the other? This, of course, involves the effort of looking beyond oneself, knowing selfishness and all its associates to be the greatest enemy of Mankind.

It is immature to consider oneself chosen for leadership, or born for a position, unless it carries with it the desire to be of real service to our fellow man. We are so dependent on our fellow creatures that it is juvenile to be self-satisfied or self-important.

When a man recognises however, that his life is incomplete in itself, that he is but a part of mankind, then he makes his contribution to the world in which he lives. "A great man feels not that he is doing something, but that something is being done through him. A great truth is encased in this discourse, "The closer a man is to God, the closer he is to men." As Fosdick says, "Life is like a library owned by an author. In it are a few books he wrote himself, but most of them were written for him."

We are all looking for the secret of life. I believe it is to be found where Jesus found it - in the lives of our fellowmen and by service to them.

## COAL FACTS!!!

When coal is used to make gas, a by-product once regarded as a nuisance is now known to be a treasure house of dyes, drugs, perfume, and explosives. This product is coal-tar.

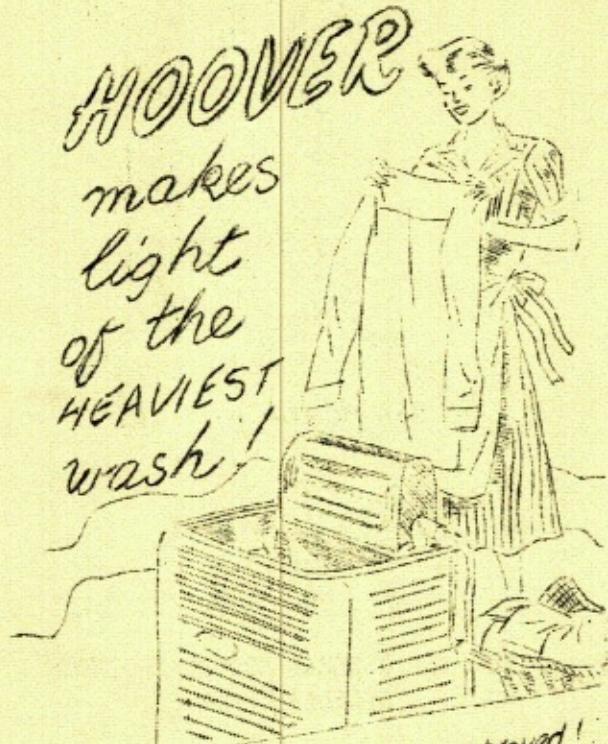
Dyes such as 'Turkey Red,' the 'Azo Scarlets' and 'Tyrian Purple,' have written Finis, to a once thriving industry of France, the Cochineal bug and the Mediterranean snail, Murex

ooooo0000ooooo

Irunculus, which insects were formerly used for their dye products. Drugs such as aspirin, phenacetin, sulphonol and veronol, stock the shelves of chemist and doctor; whilst boudoirs are fragrant with the perfume of roses or orange blossom, the kitchen air is heavy with the smell of vanilla or other similar flavouring substances, -- all derived from coal-tar. These are but a few of King Coal's many offspring.

**HOOVER**

makes  
light  
of the  
HEAVIEST  
wash!



Rise  
and Shine!  
with the

New **HOOVER**  
ELECTRIC  
**POLISHER**

as almost 200,000 women have proved!

Contact Local Agent  
(TASSY) **D. K. Brock**

14 SECOND STREET -- PHONE: LEIGH CREEK 51.

GARDEN CLUB NOTES

**ATTEND TO YOUR SHRUBS:** Most shrubs with the exception of Geraldton Wax and certain other native plants, should receive some attention during the winter months.

Shrubs are the foundation of any garden and only a little care is needed to keep them healthy. All deciduous shrubs as well as many evergreens should be pruned now.

Pruning consists of cutting out old wood and keeping a good shape. Crepe myrtles can be heavily cut back, while plants like Felecia, escallonia and diosmas require only light pruning. Buddleias, being fast growers, are inclined to become ragged if not pruned hard each season.

A dressing of 3 or 4 ounces of blood and bone manure can be hoed in around shrubs after trimming. This dressing of manure is most important in this district where the soil fertility is quickly lost.

We notice Iceland Poppies are coming into bud. It may pay to give a weak dressing of sulphate of ammonia or some other type of liquid manure but do not make the liquid too strong. If using liquid manure from bottles use strictly according to the directions.

Members and intending members of the Garden Club are reminded that subscriptions are now due, and should be paid promptly to the Treasurer, in order that they may take advantage of the new Central Bulk Store for fertilizer and other garden requisites.

NOTE: Young evergreens, trees and shrubs, should be protected from frost!!!

GARDENING CALENDAR FOR JULY

Vegetable seeds ( Cabbage, Lettuce, Pea for planting now ( Onion, Radish

Roots, Tubers etc( Artichoke, Horse Radish, ( Asparagus, Garlic, Potato

Shrubs, Vines, ( Roses, Ornamental Trees and etc., ( Shrubs, Summer Fruit Trees, ( Canna, Citrus, Grapes

ooo0000ooo

RACE CLUB PLANS NOVEL ENTERTAINMENT

WOOL SHED DANCE .. HUGE BARBECUE  
ENTERTAINMENT .. MOCK AUCTIONS  
REFRESHMENTS .. FUN GALORE

The Leigh Creek - Copley Racing Club will provide all this, through the kindness of Mr. W. Ferguson, "Moolooloo" Station, who makes available his wool shed for this novel entertainment.

Townspeople, station friends and racing enthusiasts, please take note of this date, 20th. of August, and lets get together for a grand night of fun and games.

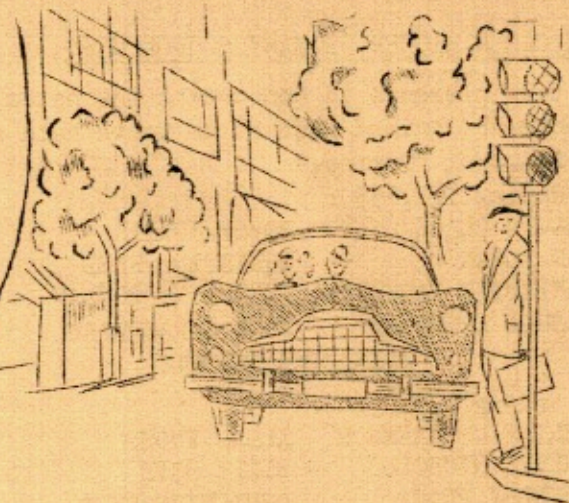
Details of admission, transportation etc., will appear in future copies of "Topics."

This is a Racing Club venture aimed at raising funds for the improvement of facilities at the Course -- making Leigh Creek a mecca for Northern Sportsmen, giving the townspeople an opportunity to mingle with our neighbors and provide the means of giving you, two or three days per year, of first class entertainment.

.....

.....

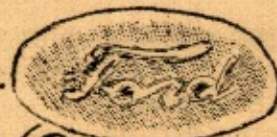
So far ahead today  
that it will  
Stay modern  
for years to come



MATCH WHAT YOU GET ...

AND WHAT YOU PAY ...

AND YOU WILL CHOOSE ...



FROM

*Sphinx Motor Co. of Quorn*

LOW DEPOSIT ::::: THREE YEAR'S FINANCE::::: TRADE-IN YOUR PRESENT CAR

LOCAL AGENTS

R. (Bob) DUNN .....COPLEY  
or 'Phone Leigh Creek 79

D. N. (Dave) MILLER ...LEIGH CREEK  
8 Fourth Street .. 'Phone L.C. 66

ACCREDITED FORD SERVICE

GENUINE FORD PARTS

.....

W. SIRES ..... 6 Fourth Street,  
LEIGH CREEK.

oooooooo 00000000 oooooooooo

CAR CLUB RALLY

Members of the Leigh Creek Car Club have completed plans for their Gymkhana & Rally to be held next Sunday afternoon.

Their plans appear to cater for Mum, Dad and the kiddies, in fact for everyone, with the exception of the family dog, and even he is invited to come out for an afternoon in the sun.

The Members and Committee having completed their initial plans for the site -- have erected a Boundary Fence, clearly defined their course and prepared a good road, right to the area.

The programme calls for 4 Novelty Events for cars, including Musical Chairs, Flag & Barrel, Driving & Parking skill. The ladies are invited to show their prowess at driving through the Balloons, while for the boys and girls are foot races (for all ages) and there are 1st., and 2nd., prizes for all events.

The Programme starts promptly at 2.00 p.m. and the road to the ground, is well marked from the T.A.A. corner.

LEIGH CREEK HOSPITAL

The Annual General Meeting of the Leigh Creek Hospital will be held at -

8 p.m. Monday July 25th. 1955  
in the Leigh Creek Community Hall.

The Agenda of the Meeting is:

1. Chairman's Report
2. Treasurer's Report
3. Election of new Committee
4. General Business

In order to insure a fair representation of the population on the Committee, a full attendance is requested.

"THE BELTANA LETTER"

Hello Leigh Creek!

Our 'eye-sore' the Church now has a New Look, and is a credit to Mr. Murrell and helpers. Professional work was done by Billy Brand and Jack Partridge, of Geelong, a newcomer in our midst. Teacher Brown took a turn or two on the concrete mixer. Mr. Allan, our Police Officer, who is also School Secretary, gave all his spare time to the job. Mr. Murrell held the first Service on Sunday, June 12th.

A broken axle delayed his departure for Radium Hill.

Kevin Fels has deserted us for Lyndhurst. Mr. & Mrs. Sexton and their two daughters are now at Beltana Station.

The 'Buff Lodge' attendance on Saturday, June 25th, was slight. Two old Members, Ron Fels and Brian Niell, on a surprise visit, and unaccompanied by their wives, caused an afternoon and evening celebration. Noticed on the local rubbish dumps the following morning, a number of broken rolling pins.

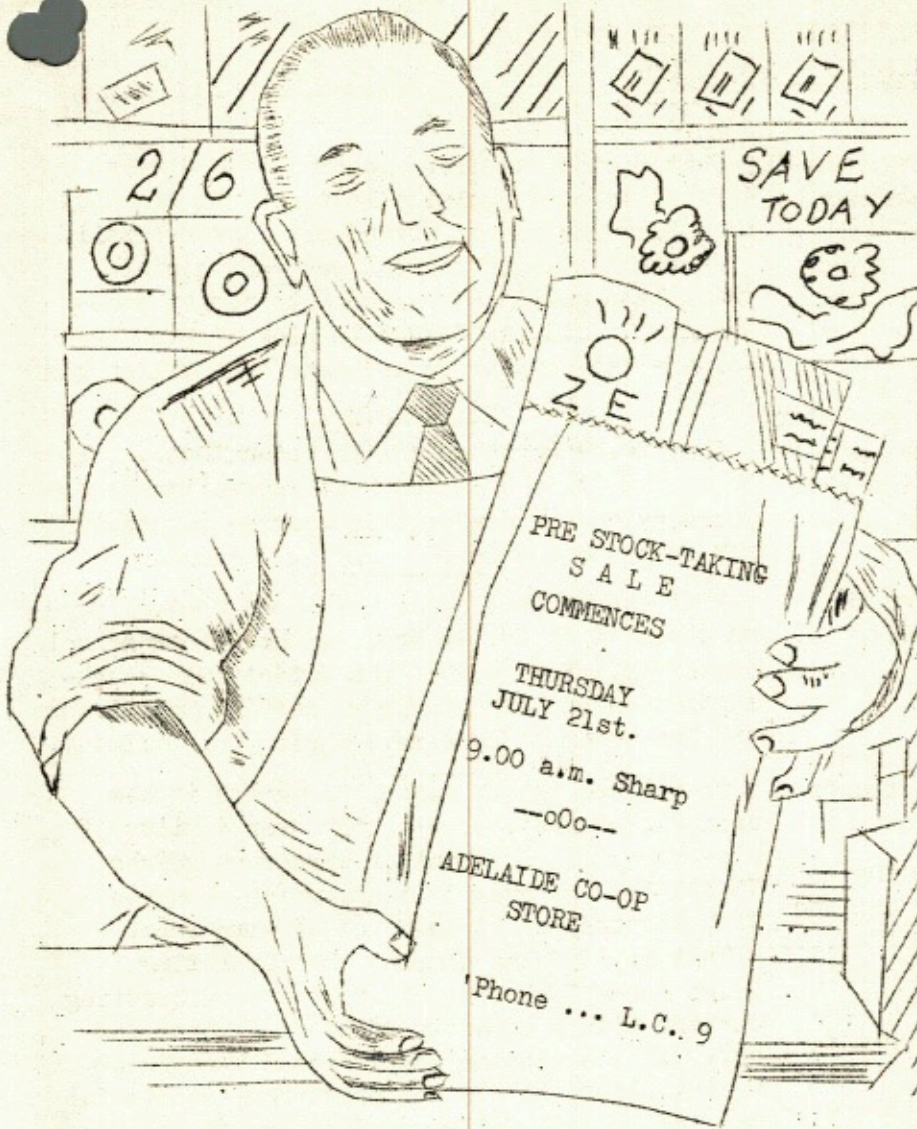
It will be remembered the boys married our most popular nursing sisters, Joyce Cook and Joy Harley.

A cheery School Committee Meeting was held on Sunday June 26th. School affairs were settled and a dance was arranged for July 16th. Come along girls, there will be a nice assortment of partners to choose from.

Tennis nominations are coming along nicely, but we would welcome more.

Cheerio,

BELTANA.



BARGAINS GALORE!

at your

LOCAL COOP STORE

REMEMBER !!!!  
 Our Half Year ends on 4th. August  
 Return Envelopes for Your REBATE!!

FARINA

The entire 'staff' of "Topics," journeyed to Farina on Sunday July 3rd, with the hope of being able to enlist the services of a Farina resident, as our most Northerly Reporter.

Altho' at one stage (when 'printing technician' Clare's fund of stories ran short) the mission seemed doomed, we are happy to relate that our negotiations were successful and in future issues of "Topics," you will receive the news of Farina and the "Further Far North," from our 'on the Spot Reporter.'

We must state here that the hospitality for which the North is noted, is very apparent in Farina and, despite our mission, we were all made exceedingly welcome at the homes of Mr. & Mrs. G. Patterson, and Mr. & Mrs. Keith Davies.

Many items of interest were noted while at Farina -- that centre has a very active Tennis Club with some very keen devotees -- the school house has just received a bright new coat of paint -- there is a resident of Farina who can sing "Dear John," with far more pathos than Johnny Ray could ever emote, he also has a most splendid accordion accompanist; through the courtesy of the Commonwealth Railways.

At the turn of the century, Farina was a thriving settlement, with two Hotels, four stores, a bakery, a butcher's shop, two dance halls and a population of several hundred.

There was a permanent water supply there at that time, from a bore which appeared to be bottomless. Farina was the headquarters in those days for the Camel Trains which carted wool from Queensland, Copper from, and supplies to Yudnamuttna, and mail and supplies to Innamincka.

The copper mines at Yudnamuttna, which at that time employed 300 men closed down about 46 years ago, ending this hectic phase of Farina's existence.

Interesting too, is the fact that the first 'Gas Buggy' ever to arrive in the North, came from England and went direct to Yudnamuttna, where it is still to be seen.

CRICKET CLUB NEWS

A match with Mt. Lyndhurst was played on our home ground on Sunday July 10th., Leigh Creek won by 92 runs.

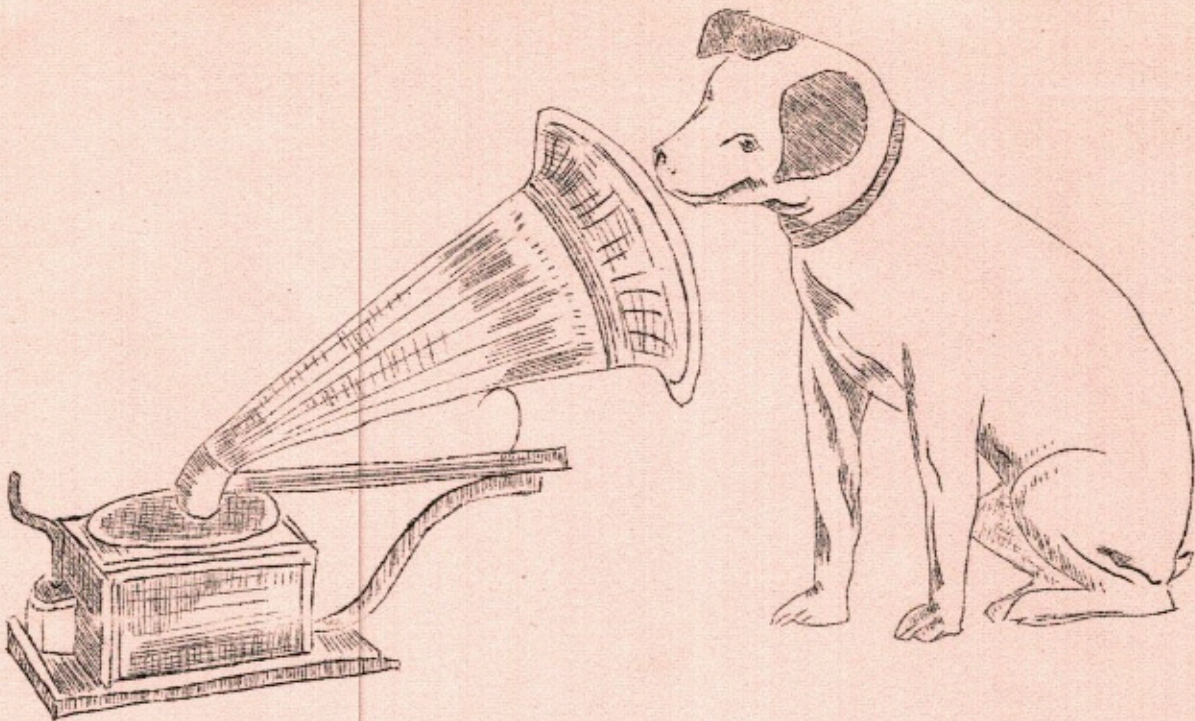
Scores were:  
 Leigh Creek 163 for 8 wickets; Gust 48, Strathearn 30 and Hennessy 23 were top scorers  
 Bowling for Lyndhurst was Todd 2 for 25, Hodder 4 for 61 and Evans 1 for 21.

Lyndhurst 71: Lewis with 37 and Davies with 12 were the only players to reach double figures. Bowling for Leigh Creek Kempster 4 for 5, Harrold 2 for 7, McLeod 2 for 17, Hennessy 1 for 7 and Gust 1 for 2.

A feature of the game was the splendid fielding of the Lyndhurst side and the excellent bowling by Lyall Kempster for Leigh Creek.

Players are reminded that a match will be played at Beltana on Sunday July 17th., starting at 1.30 p.m. SHARP and as many players as possible are requested to make the trip. On Sunday July 24th., at Leigh Creek, Repair Shop will play Stores Department.

"Push will get one anywhere -- Except through a door with "Pull" on it!"



## HIS MASTER'S VOICE

YOU CAN BE SURE-- IF IT IS H.M.V.  
 FOR RADIOS OR RADIOGRAMS, INSTALLED AT CITY PRICES  
 OR FOR ANYTHING FROM A THRUPENNY STAMP TO A TELEVISION SET, SEE YOUR LOCAL H.M.V. AGENT

*Bob Durr's Leigh Creek Bookshop*

### CHURCH NEWS AND VIEWS

#### SERVICES

Sunday July 10th., Fifth After Trinity, Sally Ann, daughter of Mr. & Mrs. David Tennent, was received into the Christian Church by the Rite of Holy Baptism.

Sunday July 17th., Sixth After Trinity, at 7 p.m. Sacrament of the Lord's Supper. At this Service the newly elected Officers and teachers of the Sunday School will be dedicated. Sunday School at 11 a.m. in the Hall.

Sunday July 24th., Seventh After Trinity, 11 a.m. NO Sunday School.

#### NEWS

For the first time since the printing of this paper we cannot report any additions to the furnishing of our Chapel. However, the people of Leigh Creek who unselfishly give of their time and money, toward the running of our Church, find it hard to condone the action of the person or persons who removed the new cocoon mat and the incinerator from the premises.

We are pleased to announce that Mr. T. Beare and Mrs. F. Edwards have agreed to become the official organists and have been approved by the Committee.

#### VIEWS

Our Sympathy is expressed to Mr. & Mrs. Ron Morgan in their recent loss.

We are continually thankful to Mrs. Sargent who week by week attends to the flowers etc., in the Church.

The Local Committee also thanks those people who have pledged themselves to the envelope system as a means of supporting the work of God in this community.

(Rev. F. Measday)

.....

### MUTUAL HOSPITAL NEWS

We would like to bring to the notice of residents of Leigh Creek, the Hospital and Medical benefits which are available under our scheme.

You are unable to participate in the Federal Health Scheme unless you are a financial member of a Non-profit Organisation, approved by the Commonwealth Government.

HOSPITAL BENEFITS range from £5/12/- per week to £16/16/- per week plus £4/4/- per week Commonwealth Benefits. Theatre Fees are also allowable: £2/-/- Major Operations and £1/-/- Minor operations.

MEDICAL BENEFITS including Commonwealth Benefits, allow 13/6 per Doctor's visit, Confinements £9/-/- Surgery up to £31/5/- In addition cover is allowable for Anaesthetics, X-Ray, Pathology and Bio-chemistry, Injections, Immunisation etc.

Employees of the E.T.S.A. may have their contributions deducted from salaries or wages each fortnight. Non-employees of the Trust may join by paying quarterly, half-yearly or yearly direct to our office at 74 King William St., Adelaide.

An official agent at the Field will be appointed shortly and will have the necessary brochures, application forms, claim forms etc., and be only too pleased to interview persons interested.

A representative of the Association from Adelaide (Mr. Roderick) well known to quite a few at Leigh Creek, will shortly visit your centre to enroll new members, and answer any queries which existing members may wish to raise.

.....

Experience is a fine teacher, it's true,  
 But here's what makes me burn:  
 Experience is always teaching me  
 Things I'd rather not learn!

ooooo